



## SPARE PARTS & ACCESSORIES Lansinoh 2-In-1 Double Electric Breast Pump

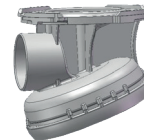
PRODUCT NUMBER: 53060/53065



**PRODUCT CODE:** 53401  
**DESCRIPTION:** White Valve  
**PRICE:**



**PRODUCT CODE:** 53461  
**DESCRIPTION:** Sealing Cap  
**PRICE:**



**PRODUCT CODE:** 53454  
**DESCRIPTION:** Breast Cushion Body  
**PRICE:**



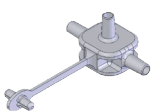
**PRODUCT CODE:** 53402  
**DESCRIPTION:** Diaphragm  
**PRICE:**



**PRODUCT CODE:** 53403  
**DESCRIPTION:** Tubing - 2 x 300mm & 1 x 600mm  
**PRICE:**



**PRODUCT CODE:** 53408  
**DESCRIPTION:** Comfort Fit Breast Cushion - Standard  
**PRICE:**



**PRODUCT CODE:** 53405  
**DESCRIPTION:** Tubing Y Connector  
**PRICE:**



**PRODUCT CODE:** 53451  
**DESCRIPTION:** 160ml Container - Milk Storage Bottle  
**PRICE:**



**PRODUCT CODE:** 50419  
**DESCRIPTION:** Comfort Fit Breast Cushion - Large  
**PRICE:**



**PRODUCT CODE:** 53410  
**DESCRIPTION:** Diaphragm Cap  
**PRICE:**



**PRODUCT CODE:** 53452  
**DESCRIPTION:** Bottle Holder  
**PRICE:**



**PRODUCT CODE:** 53450  
**DESCRIPTION:** Container Ring & Disc  
**PRICE:**



**PRODUCT CODE:** 53453  
**DESCRIPTION:** Pump Connector  
**PRICE:**



## SPARE PARTS & ACCESSORIES Compact Single Electric Breast Pump

PRODUCT NUMBER: 54091(UK)/54090(EU)

**Lansinoh®**



**PRODUCT CODE:** 53401  
**DESCRIPTION:**  
White Valve  
**PRICE:**



**PRODUCT CODE:** 54100  
**DESCRIPTION:** Tubing  
800mm  
**PRICE:**



**PRODUCT CODE:** 53408  
**DESCRIPTION:**  
Comfort Fit Breast Cushion  
- Standard  
**PRICE:**



**PRODUCT CODE:** 53402  
**DESCRIPTION:**  
Diaphragm  
**PRICE:**



**PRODUCT CODE:** 53451  
**DESCRIPTION:**  
160ml Container -  
Milk Storage Bottle  
**PRICE:**



**PRODUCT CODE:** 50419  
**DESCRIPTION:**  
Comfort Fit Breast Cushion  
- Large  
**PRICE:**



**PRODUCT CODE:** 53410  
**DESCRIPTION:**  
Diaphragm Cap  
**PRICE:**



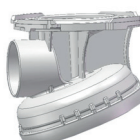
**PRODUCT CODE:** 54106  
**DESCRIPTION:**  
Pump Connector  
**PRICE:**



**PRODUCT CODE:** 53470  
**DESCRIPTION:**  
CSEBP AC Adapter - **UK**  
Standard  
**PRICE:**



**PRODUCT CODE:** 53463  
**DESCRIPTION:** Teat collar  
**PRICE:**



**PRODUCT CODE:** 53454  
**DESCRIPTION:**  
Breast Cushion Body  
**PRICE:**



**PRODUCT CODE:** 53471  
**DESCRIPTION:**  
CSEBP AC Adapter - **EU**  
Standard  
**PRICE:**



**PRODUCT CODE:** 53461  
**DESCRIPTION:** Sealing Cap  
**PRICE:**



## SPARE PARTS & ACCESSORIES

Lansinoh

Manual Breast Pump

PRODUCT NUMBER: 50555



**PRODUCT CODE:** 53401  
**DESCRIPTION:** White Valve  
**PRICE:**



**PRODUCT CODE:** 53452  
**DESCRIPTION:** Bottle Holder  
**PRICE:**



**PRODUCT CODE:** 50621  
**DESCRIPTION:** Handle  
**PRICE:**



**PRODUCT CODE:** 53450  
**DESCRIPTION:** Container Ring & Disc  
**PRICE:**



**PRODUCT CODE:** 50626  
**DESCRIPTION:** Silicone Diaphragm  
**PRICE:**



**PRODUCT CODE:** 50627  
**DESCRIPTION:** Stem  
**PRICE:**



**PRODUCT CODE:** 53461  
**DESCRIPTION:** Sealing Cap  
**PRICE:**



**PRODUCT CODE:** 53408  
**DESCRIPTION:** Comfort Fit Breast Cushion - Standard  
**PRICE:**



**PRODUCT CODE:** 53451  
**DESCRIPTION:** 160ml Container - Milk Storage Bottle  
**PRICE:**



**PRODUCT CODE:** 50419  
**DESCRIPTION:** Comfort Fit Breast Cushion - Large  
**PRICE:**